

# Chain into Beads - a simple beading chain project



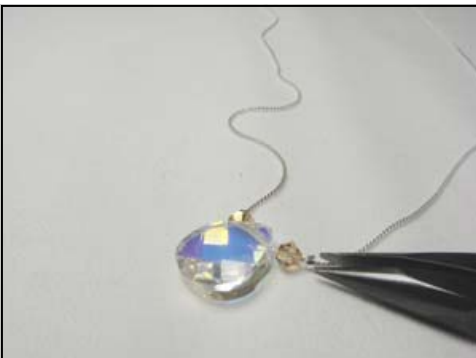
**Tools:** Chain nose pliers

**Materials** to make a 16" necklace:

- 1 x Swarovski® briolette pendant (crystal AB, 12 x 15 mm)
- 2 x Swarovski® Helix beads (Brandy, 8 mm)
- 6 x Swarovski® Bicone beads (Brandy, 4 mm)
- 15" sterling silver beading chain (0.65 mm)
- 6 x sterling silver crimp beads (2 x 1 mm)
- 2 x sterling silver end caps for beading chain
- 2 x sterling silver jump rings (4 mm heavy)
- 1 x sterling silver toggle clasp

Estimated time: 30 - 45 minutes

Estimated cost: \$20



1. String 1x crimp bead, 1x 4 mm crystal, the pendant, 1x 4 mm crystal and 1x crimp bead into beading chain. Center the beads and flatten the crimp beads with chain nose pliers to hold the beads in place.



2. String 1x crimp bead approximately 1" from the last crimp bead in step 1. Crimp it in place.



3. String 1x 4 mm crystal, 1x Helix crystal, 1x 4 mm crystal and 1x crimp bead next to the crimp bead from Step 2. Crimp the last crimp bead in place. Repeat Step 2 & 3 for the other side.



4. String one end of the beading chain into an end cap. Gently crimp it in place. Connect one end of the clasp to the end cap with one jump ring. Repeat the other end of the beading chain to complete the necklace.

