

How to making rosary links



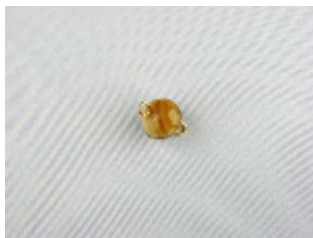
Step 1. Cut a section of wire to allow 3/8" on both sides of the beads.



Step 2. Bend a 90° angle on top of one side of the bead (3/8" from one end of the cut wire).



Step 3. Make a simple loop on top of the bead. Grab the end of wire between the jaws of round nose pliers, curve up the wire slowly, adjusting the pliers to complete the loop. The end of the wire will meet the angle made in step 2.



Step 4. Repeat steps 2 - 3 to make another simple loop on the other side of the bead.



Step 5. Repeat steps 1 - 4 to make a second rosary bead link.



Step 6. Connect the two rosary bead links together. Open one of the loops on one rosary link, slide the second rosary link into the opened loop and close the loop to finish the connection.

Instructions for making rosary links, as well as other basic beading techniques are available on our web site: www.lilysbeads.com

77 Great Road, Acton, MA 01720

978-635-0068

www.lilysbeads.com

